

**Salmon Falls
Watershed
Collaborative
Progress Report -
May 2011**

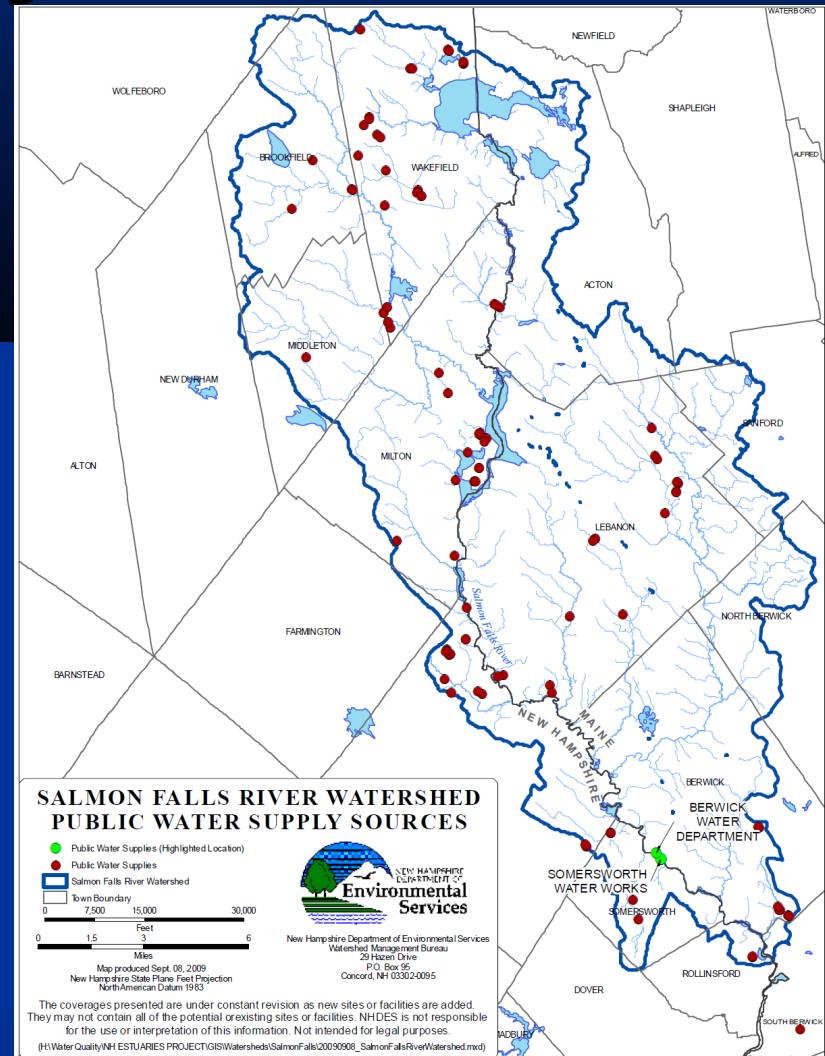
Paul Susca, NH DES

Andy Tolman, ME CDC

SFWC Project Area

Salmon Falls River Watershed

- Approx. 250 square mile coastal watershed
- Includes over a dozen towns in ME and NH
- Surface water and multiple groundwater public water systems within watershed
- Increasing development pressures and degraded water quality, but little watershed-wide focus to date



SFWC Project Overview: the Plan

- One-day workshop focused on defining watershed-wide approaches and priorities for source water projection
- **Blueprint for action**
- **Post-workshop priority action implementation**
- **Timeline (18-21 months)**
 - Planning for workshop began November 2009
 - Workshop held October 27, 2010
 - **6-12 months to implement low-cost, high priority actions after workshop**

Project Participants



- **Project lead: Piscataqua Region Estuaries Partnership (contractor: Wells NERR)**
- **Core planning team: MECDC, NHDES, EPA Region 1, City of Somersworth, MRWA, GSRWA**
- **Multiple project partners via Basecamp incl. SWC reps (& Salter>Mitchell)**
- **Workshop participants**

Support We Requested from SWC

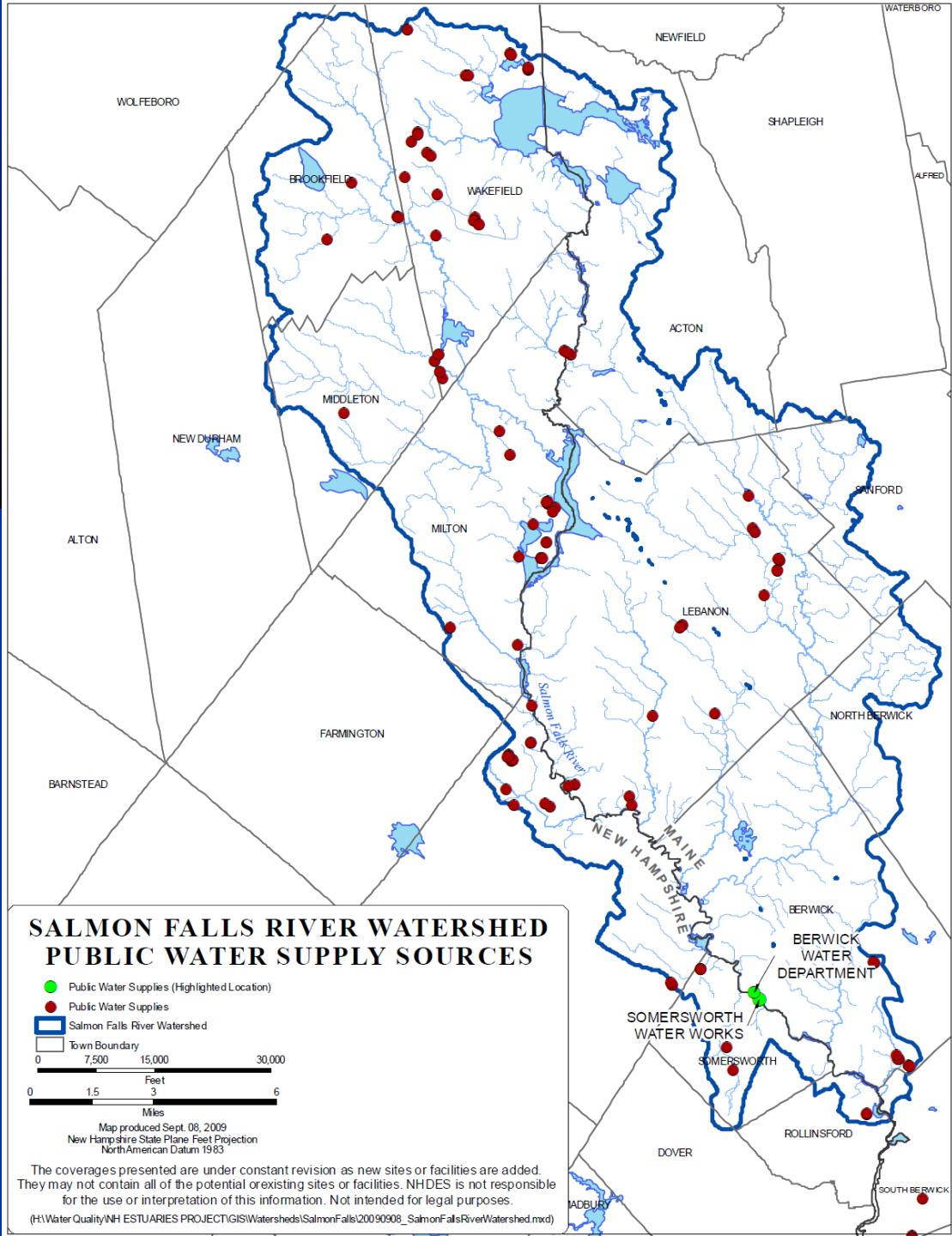
- Financial Support (\$5K): venue, facilitator, post-workshop implementation project
- SWC Member Support: encourage local members/affiliates participation
 - Esp. GSRWA, MRWA, NHWWA
- Salter>Mitchell assistance
 - Liaison to SWC
 - Assist project planning team
 - Post-workshop communication assistance

Project Transferability

- Watershed-wide approach involving many partners
 - Local-regional-state partners
 - Bi-state collaboration
 - Integrating source water protection with watershed planning and land conservation efforts
 - New partnership opportunity: 28 coastal watershed programs across the country are part of the USEPA National Estuary Program

Workshop Results

- We identified many possible actions
- Compiled a matrix of opportunities
- Planning Team developed priorities (this took a while!)
- Developing Action Plan
 - There were and are too many things we could be doing. Rather than let the energy dissipate like waves on a beach, we're digging channels.
 - Action Plan expected within a few months



SALMON FALLS RIVER WATERSHED PUBLIC WATER SUPPLY SOURCES

- Public Water Supplies (Highlighted Location)
 - Public Water Supplies
 - Salmon Falls River Watershed
 - Town Boundary
- 0 7,500 15,000 30,000
 Feet
 0 1.5 3 6
 Miles

Map produced Sept. 08, 2009
 New Hampshire State Plane Feet Projection
 North American Datum 1983

The coverages presented are under constant revision as new sites or facilities are added. They may not contain all of the potential or existing sites or facilities. NHDES is not responsible for the use or interpretation of this information. Not intended for legal purposes.

(H:\Water Quality\NH ESTUARIES PROJECT\GIS\Watersheds\Salmon Falls\20090908_Salmon Falls River Watershed.mxd)

Post-Workshop Priorities

- Low Impact Development
 - Field trips: LID examples and UNH Stormwater Center
 - NEMO and Forging the Link
 - Sponsor LID demonstration projects
 - Resources on SFWC webpage
- Assist municipalities to develop & adopt ordinances
 - Drinking water/aquifer/source water protection
 - Conservation subdivision, LID, stormwater
- Support land conservation organizations efforts to conserve lands with water quality benefits.
- Identify potential threats and sources of contamination to public water supplies to guide planning and mitigation.

Meanwhile . . .

- Website hosted by PREP
www.prep.unh.edu/sfwc.htm
- E-Newsletter
- PREP obtained grant from NHDES
- NRCS conservation assistance plan
- AWWA is a bright spot
- Field trips planned for summer 2011
- Resources are limited

Acton Wakefield Watersheds Alliance

- Lake Summit June 11 “Clean Lakes Campaign”
- Bringing together nine headwaters lake groups
- Key Collaborative members participating
- Goal: Motivate lake groups to take action to protect *their* water quality (which will benefit downstream watershed)

2011 Summer Field Trips

- **LID/Stormwater (ME & NH)**
- **Wildlife & water quality (Maine)**
- **York & Kittery (ME) source water protection & conservation hike**
- **Water communications workshops with Eric Eckl “Water Words That Work”**
- **Evening on the Salmon Falls River with Eric Eckl and other invitees**

National-Level Assistance Needed

- Funding for land conservation (or guidance from land conservation organizations and funding sources (NRCS, etc.) to identify the best funding opportunities)
- Financial support to enable PREP to provide direct assistance to municipalities on ordinance development
- Financial support for state RWA SWP circuit riders
- Information on value of source water protection – specific to Salmon Falls Watershed